

Brownsville Economic Outlook

Strengths

- Foreign trade zone and numerous federal and state assistance programs.
- Low business costs.
- Well-developed transportation infrastructure.

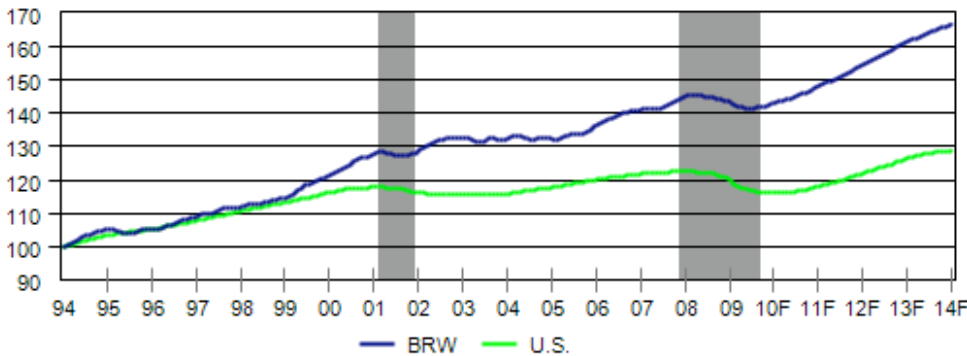
Weaknesses

- Very low per capita income.
- Extremely low educational attainment rates.
- Structurally high unemployment rate.

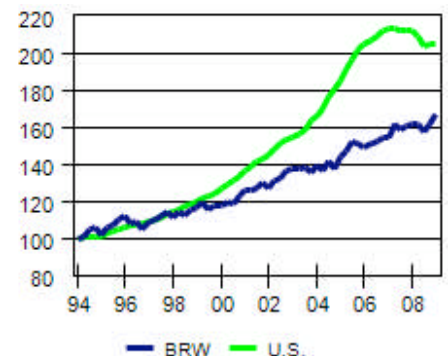
How Does Brownsville Rank?

EMPLOYMENT GROWTH RANK Best=1 Worst=392	COST OF DOING BUSINESS U.S.= 100% 92%
2008-10 23 1st quintile	COST OF LIVING U.S.= 100% 82%

Relative Employment Performance



House Prices



Précis® Metro

Get the complete Brownsville economic outlook and profile

Précis Metro reports offer comprehensive, concise analysis and data on the current and expected economic conditions for each of the nation's metropolitan areas

(includes Puerto Rico).  [View Sample](#)

Forecasts of key indicators that drive metro area economies.

- Gross metro product
- Employment
- Personal income
- Population

Measures of risks and opportunities:

- Cost of doing business
- Cost of living
- Risk-adjusted return
- Industrial diversity



Add to My Shopping Cart

- Abilene (TX)
- Aguadilla (PR)
- Akron (OH)
- Albany (GA)
- Albany (NY)
- Albuquerque (NM)
- Alexandria (LA)
- Allentown (PA)
- Altoona (PA)
- Amarillo (TX)

- Single Report: US\$ 350
- Subscription: US\$ 900
(Regular Updates 3x per year)

Add To Shopping Cart

Moody's Economy.com
121 North Walnut Street
Suite 500
West Chester, PA 19380-3166
United States
610.235.5299
610.235.5302 (fax)
[E-mail Moody's Economy.com](#)

Moody's Economy.com
12 Arthur Street
London EC4R 9AB
United Kingdom
+44 (0) 20.7621.9068
+44 (0) 20.7618.2389 (fax)
[E-mail Moody's Economy.com](#)

Moody's Economy.com
Level 10
1 O'Connell Street
Sydney, NSW, 2000
Australia
+61 2.9270.8111
+61 2.9252.3181 (fax)
[E-mail Moody's Economy.com](#)

